



**WEDDING, PARTY,  
CONCERT, EVENT,  
ANNIVERSARY,  
BIRTHDAY,  
GRADUATION ...**

**Trimble**  
+ ASSOCIATES

**PARTY + EVENT**

MANUFACTURER REPRESENTATIVES FOR THE MID-ATLANTIC

## Step up to a better solution.

The AXIS 2.0 aluminum staging system is light-weight, reliable, fast and easy-to-assemble. The rugged aluminum frame is designed for indoor and outdoor use. So whether you are setting the stage for a college graduation, an electric performance or a dance floor for a wedding or party, Granite is always the most reliable and dependable solution.

# Granite

Indoor/Outdoor  
**Staging**

Rugged frame  
**Meets IBC Code**

Proudly  
**Made in the USA**

Complete line of  
**stairs & ramps**



### AXIS 2.0 Aluminum Staging & Signature Staging

#### EASY SET UP INCREASES PROFITABILITY

AXIS 2.0. This lighter metal allows for ease of use and durability. Available in a variety of shapes and dimensions with unique locking hooks; your options for configurations are endless.

The AXIS 2.0 is compatible with most steel stage decks including Granite and Signature stages. This allows for an easy cross over from

#### 4-2-1 Leg System

AXIS 2.0 provides the ability to “hang” the decks on each other. This decreases the legs needed for each stage. Starting with four legs on the first stage, it drops to two legs and then one leg after the perimeter is set. Saving time in setup and cost.

Signature Staging 4' x 4' standard deck sizing stacks and stores easily. 3/4" thick plywood exterior black plywood is finished on one side. Optional 5/8" exterior plywood with gray carpet also available. Compatible with most other 4'x4' stage deck systems.

Roto-locks fasten decks together to form an integrated staging unit and can be accessed from either the top or bottom of the stage deck.

#### Standard AXIS Staging Features

- Made in the USA.
- Very lightweight and easy to handle.
- Use with our standard legs or FoldX legs
- Rugged aluminum frame construction meets IBC Code.
- Choice of standard 1/2" painted deck top or Premium Quad Ripple Laminated.
- Designed for indoor and outdoor use.
- Can be used with multiple leg systems: Square, round, adjustable and others.
- Use as a flat stage, multilevel stage, stage extension, tiered seating, event platform, display tower, runway, etc.

# The perfect compliment and the total solution.

In addition to staging, Granite has a full range of scaffolding, indoor/outdoor seating along with crowd control products to handle all of your event needs. Keep your event staff and attendees safe with quality, durable products, each designed to handle specific applications. Granite also offers carts, dollies, hand trucks plus many specialty items, including electric powered carts, wagons and wheelbarrows for transporting staging and equipment.



## Granite Scaffolding INDOOR/OUTDOOR SCAFFOLD

Take the guess work out of scaffold. To make it easier to purchase, we have created pre packaged scaffold rolling tower units. Granite Industries Rolling Tower Packages are designed with Heavy Duty Single Step Scaffold Frames that will meet the most rigid requirements.

Our Rolling Tower Packages have a platform size of 5'W X 7'L and include everything from wheels to guardrail systems. The larger tower packages have a platform size of 5'W X 10'L and also include all necessary equipment to build the tower. This is designed for your convenience, and allows for a complete Tower System.



## Granite Seating INDOOR/OUTDOOR SEATS

Signature Deluxe Series bleacher includes everything our regular Signature Bleachers offer, plus guardrail, double footboards, and toeboards on the top 4 rows along with an aisle with handrail.

Our guardrail is made from welded and powder coated steel tubing, making it much more eye appealing. This type of guardrail offers better safety compared to our competitor's chain-link fence style guardrail, as it offers more stability and deters children from climbing. Also, select from three styles of seating: Bench, Bench with Back and Flip Up seat with Back.

Meets International Code Council (ICC) specifications.

Signature Series is an affordable system for your seating needs.



## Granite Crowd Control Fencing 8 FOOT BARRIERS

Crowd control fencing is great for Sports Events, Rallies, Parades, Fairs or Construction Sites. Easy to set up and take down. Durable hot-dip galvanized finish.

Choose from three base foot options; Flat, Wide Arch or Narrow Arch.



# Power. Mega silent. Ultimate performance.

Imagine a generator, so quiet that you didn't know it was running even though you were standing just 10 feet away from it. TecnoGen units are 53dB, that's 10dB less than anybody in rental. Now, imagine how happy your party host will be. So what could make this generator more attractive? A wide selection and great pricing!

# TecnoGen



10 decibels less than competitors

## Mega Silent Generators 20kW - 350kW

### Just some of the many benefits of TecnoGen Generators

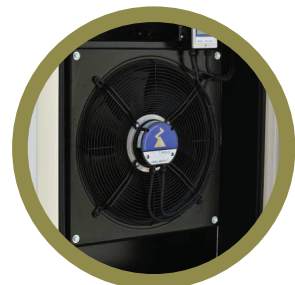
- Fuel Efficient
- 10kW - 3,400kW
- Quieter than most machines on the market
- International Manufacturer with over 40,000 unit production capacity
- Removable Fuel Tank
- 110% Containment - All Fluids
- Skid or Trailer Mount
- New Innovative Cooling Design
- Full Remote Control through GPS
- Integrated Fork Pockets
- Oversized fuel tanks for longer run times
- Integrated Lifting Eye
- Heavy All Steel Construction
- Easy Access doors for maintenance
- Deep Sea Controllers
- LeRoy Somer Alternators



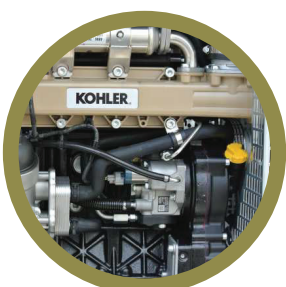
**Mega Silent**  
Thick 2", Triple Sealed Access Doors



**Easy to Use**  
Easy to Use DEEP-SEA Electronic Controller



**Cool and Quiet**  
VSI Technology-Variable Speed Induction Cooling Fans



**Tier 4**  
Kohler KDI Tier 4 Final Designed Engines\*



**Prepared**  
External Fuel Tank Hook Up Standard



**Efficient**  
Oversized Fuel Tanks for Extended Run Times

So many options, only one standard performance.

With a choice of payloads and capacities, and reliable construction details, no job is too big when you're behind the wheel of a Cushman. So whether it's hauling people or equipment, picking up after an event or providing the ultimate in revenue-generation, Cushman will be right there with you on every turn of the way.

# Cushman



Gas or electric power  
1,200-lb capacity

**Shuttle 8** 8-person seating  
**Shuttle 6** 6-person seating  
**Shuttle 4** 4-person seating  
**Shuttle 2** 2-person seating



**SHUTTLE 2  
LABOR SAVER**

Room for two and an extra-long cargo deck gets people where they need to be in comfort and style.

- Seating for two passengers
- Available in gas or electric
- 1,200-lb capacity



**HAULER 4x4  
POWER BUILT TO GO ANYWHERE**

Powerful features built to handle anything or anywhere.

- Available in gas or diesel
- User-selectable 4WD
- Standard safety feature including seat-belts and rollover protection system
- 25 mph max speed



**TITAN HD  
MOVE WITH CLASS**

With increased cargo and towing capacities, this is one work vehicle that never backs away from the big jobs.

- 21.6-sq-ft, 3,000-lb capacity cargo bed
- 4,600-lb towing capacity

## Rise to new heights.

From scaffolding to scissor lifts, Haulotte has the products you need to reach the hard places. Large platforms ranging from 15ft to 53ft working height, Compact for easy access to narrow spaces, equipped with Rough Terrain diesel for outside applications or silent Electric for interior use, their platform capacity ranges from 507 to 2204 lbs. Take your events to new heights with Haulotte.

# Haulotte



### Scissor Lifts

Indoor/Outdoor

### Vertical Masts

Multiple Heights

### Articulating

Booms

### Telescopic

Booms + Trailers



#### COMPACT 2032 E - ELECTRIC OPTIMUM COMPACTNESS

This compact scissor operates in the most congested areas, is driveable at full height and provides long working cycles.

- Exceptional productivity
- Extended platform
- Width of 2 ft 7 in: Easy access through standard doorways
- Load capacity up to 770 lbs

#### ELECTRIC SCISSOR LIFT OPTIONS

**OPTIMUM 1931 AC**  
Capacity of lifting max: 500  
Working height: 18

**COMPACT 2047 E**  
Capacity of lifting max: 1000  
Working height: 20

**COMPACT 2632 E**  
Capacity of lifting max: 500  
Working height: 26

**COMPACT 2747 E**  
Capacity of lifting max: 1000  
Working height: 27

**COMPACT 3347 E**  
Capacity of lifting max: 650  
Working height: 33

**COMPACT 3947 E**  
Capacity of lifting max: 770  
Working height: 39



#### TELESCOPIC BOOMS BUILT TO REACH ANYWHERE

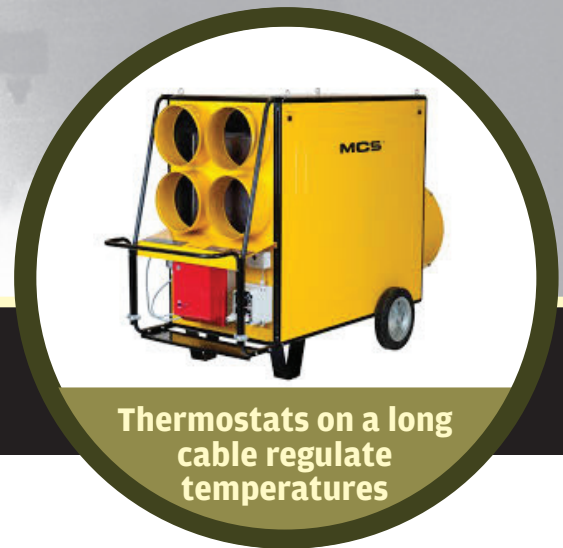
Fully proportional controls and simultaneous boom functions provide a 360° continuous turntable rotation.

- Exceptional productivity
- Hydraulic differential lock
- Outstanding rough terrain driving features
- Reach heights of 40' to 132'

# There is a warmth and a glow of happiness.

MCS is a world leader in indoor and outdoor portable heating, which provides a wide range of heating options for your event. Highly efficient, large volume, quiet, 100% clean air heaters keep comfortable temperatures with thermostats and flexible hoses. Guests will stay warm, while not even knowing that heaters are behind the scenes.

# MCS



**Thermostats on a long cable regulate temperatures**

## **Indirect fired**

Large Volume Heater

## **Oil fired infrared**

Radiant Heating

## **Direct fired**

Outdoor Instant Heat



### **INDIRECT FIRED HEATERS**

#### **HIGHLY EFFICIENT, LARGE VOLUME, 100% CLEAN INDOOR WARM AIR**

Indirect oil heaters are highly efficient devices that provide large volume of 100% clean, dry and fume free warm air. They are best for places with limited ventilation like event's tents, food preparation areas or exhibition halls. Use with flexible hoses to spread around warm air easily.

- 68,000 to 500,000 Btu/h
- Up to 4712 cfm air displacement
- Connection room thermostat opt.



### **OIL FIRED INFRARED HEATERS**

#### **QUIET AND HEATS LIKE THE SUN**

Infrared oil heaters deliver heat fast and exactly to the place where it is required without any air movement. Perfect for heating indoor and outside spaces.

- 58,000 to 146,000 Btu/h
- Radiant heating
- No air flow
- Low noise
- Possible connection to an optional room thermostat



### **DIRECT FIRED HEATERS**

#### **LARGE VOLUMES OF INSTANT HEAT FOR OUTDOOR EVENTS**

Direct oil heaters are highly efficient devices that provide large volumes of instant heat where it is required. MCS direct heaters are known as very efficient and robust as well as safe and easy in use.

- 379,000 Btu/h
- Up to 1944 cfm air displacement
- Possible connection to an optional room thermostat and/or fuel pre-heater

## Under the tent and under the stars.

Often events are successful due to the things the party attendees never knew existed at the time, like heaters, fans, air coolants, evaporative coolers, serving equipment and much more.

# PHP

**Portable Heater Parts**  
and much much more

**Over 15 Brands Including**  
HeatStar, Heat Wagon and LB White



**Thermostats on a  
20' cord regulate  
temperatures**



### **PROPANE DIRECT FIRED HEATERS** **LARGE VOLUMES OF INSTANT HEAT** **FOR OUTDOOR EVENTS**

Direct oil heaters are highly efficient devices that provide large volumes of instant heat where it is required.

- 80,000 to 350,000 Btu/h
- Remote Thermostat Included
- Totally Enclosed Flame
- Easy Start Electronic Ignition
- Service Saver Self Diagnostic Feature
- Airflow Safety Devices
- CSA Approved



### **DUAL FUEL (NATURAL GAS/PROPANE)** **DIRECT FIRED TENT HEATERS** **LARGE VOLUMES OF INSTANT HEAT** **FOR OUTDOOR EVENTS**

These are highly fuel efficient, portable, cost effective heaters able to be used with or without a duct or diffuser. Manage comfortable temperatures, shorter pre-heat times and fuel consumption using high or low settings.

- Multi-rate settings 115,000 BTU - 80,000 BTU
- Dual fuel at flip of switch NG or LP

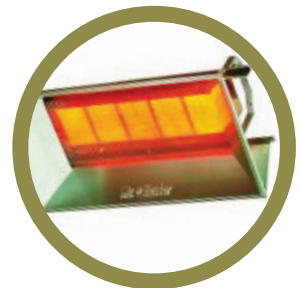


#### **A Wide Selection of Accessories**

- Diffusers with Duct Adapters
- Duct Adapter Rings
- Diffuser Transition Duct
- Flexible Duct
- Thermostats
- Electrical Cords
- Remotes
- Propane Tanks



PHP is been a staple in the heating and air coolant industry due to it's selection of quality products, pricing and inventory that's in stock and ready to ship next day.



## Completing your check-list

In addition to the many core products we offer, we also offer many of the items crucial to a safe, clean and successful event, such as fire extinguishers, two-way radios, Jobox storage, utility carts, site fencing, leveling lasers, duct tape, batteries, temporary power, extension cords, ventilation and more . . .

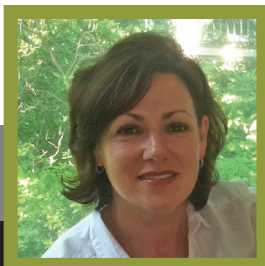


Please feel free to contact us phone or email. We're here to help answer any questions, or take orders. Ask us about our fully stocked warehouse too!



**Brian Trimble**  
*Managing Director*

410.688.4173  
btrimb1@gmail.com



**Jennifer Trimble**  
*Sales Representative*

443.299.9765  
jentrimble1@gmail.com



**Will Carlton**  
*Sales Representative*

443.299.8957  
willcarlton22@gmail.com



**Mike Matthews**  
*Marketing Director*

443.845.1621  
mikem.mktg@gmail.com