

PAVING STONE VIBRATORY PLATE

ESI MODEL: EVPC120H



A vibratory plate dedicated to compacting paving stones. The EVPC has rubber-coated rollers which allow the plate to move quickly and efficiently over the pavers. The protected rollers will not chip or mark the pavers and the rollers allow for easy and smooth maneuvering over the pavers.



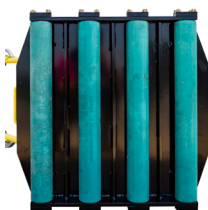
FEATURES:



Honda GX160, a proven, dependable power source.



Folding handle for transport and storage convenience. The handle then acts as engine protection during transport. An integral lifting bail offers a secure lifting point.



Rubber coated rollers protect the pavers. Smooth travel over the pavers without chipping the corners and scuffing the paver surface.



Durable rack and pinion throttle lever. Very smooth operation and stay-in-place settings. This lever is repairable thereby reducing maintenance costs.

PAVING STONE VIBRATORY PLATE

ESI MODEL: EVPC120H

TECHNICAL DATA

Dimensions L x W x H in (mm):	26.2 x 26.4 x 47.2 (665 x 670 x 1200)
Plate Size L x W in (mm)	25.8 x 24.4 (655 x 620)
Operating Weight lbs (kg):	271 (123)
Vibration Frequency vpm (Hz):	5,640 (94)
Centrifugal Force lbs (kg):	2,315 (1,050)
Compacted Area ft ² /h (m ² /h):	6,458 - 7,534 (600 - 700)
Fuel Tank Capacity - gal (Ltr):	0.8 (3.1)
Running Time (hours):	1.7
Engine:	Honda GX-160
Engine Type:	4-stroke gasoline
Max. Power Output: HP(kW):	4.8 (3.6)



How To: Compact Concrete Paving Slabs
31,434 views

INDEPENDENT REVIEW

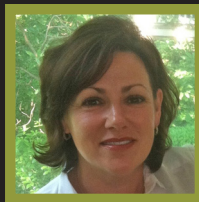
A rental company and ESI customer does a hands on review of the ESI compactor for YouTube. Watch as they explain how ESI has come up with a compactor designed to eliminate the need to cover the slabs with plywood. They discuss how this machine prevents cracking and scuffing of the slabs, how the EVPC 120H supplies 2315 pounds of centrifugal force to embed the paver slabs and to consolidate the joint sand., and how the machine weighs 275 pounds and has 4 rubber coated rollers.



View on
your computer
or smart phone



Brian Trimble
Managing Director
410.688.4173
Brian@trimblesales.com



Jennifer Trimble
Sales Representative
443.299.9765
Jen@trimblesales.com



Mike Keremes
Territory Sales Manager
724.288.7779
MikeK@trimblesales.com



Mike Matthews
Marketing Director
443.845.1621
Mike@trimblesales.com

Centrally located to easily serve:

Pennsylvania
New Jersey
Delaware
Maryland/DC
Virginia
West Virginia

Trimble + Associates
4525 Rosemary Way
Street, MD 21154